



Lot 221/105 Twelfth Avenue Austral

LAND PRICE
\$625,000

HOUSE PRICE
\$405,000

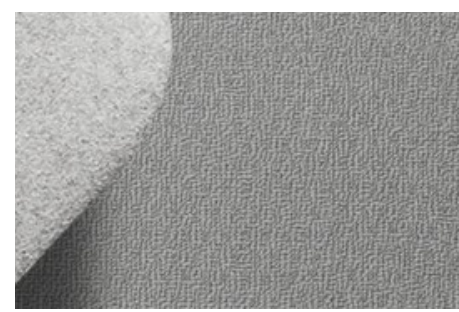
WINDHAM 3 WITH ENSUITE

Inclusions:

- ✓ Ceramic tiling to Porch, Entry, Dining / Family
 - ✓ Natural Gas Package - inc Rheem Instantaneous HWS
 - ✓ Insulation to ceiling & walls
 - ✓ Colourbond Roofing
 - ✓ Natural Coloured Driveway
 - ✓ 20mm Caesarstone benchtop to kitchen
 - ✓ 600mm European stainless steel appliances
 - ✓ Freestanding Bath
 - ✓ PEACE OF MIND INCLUSIONS PACKAGE
- * For full inclusions visit our website at www.codehomes.com.au

3BED 2BATH 1CAR

Quality Inclusions. Quality Brands



 **caesarstone®**

 **Bradnam's**
windows & doors

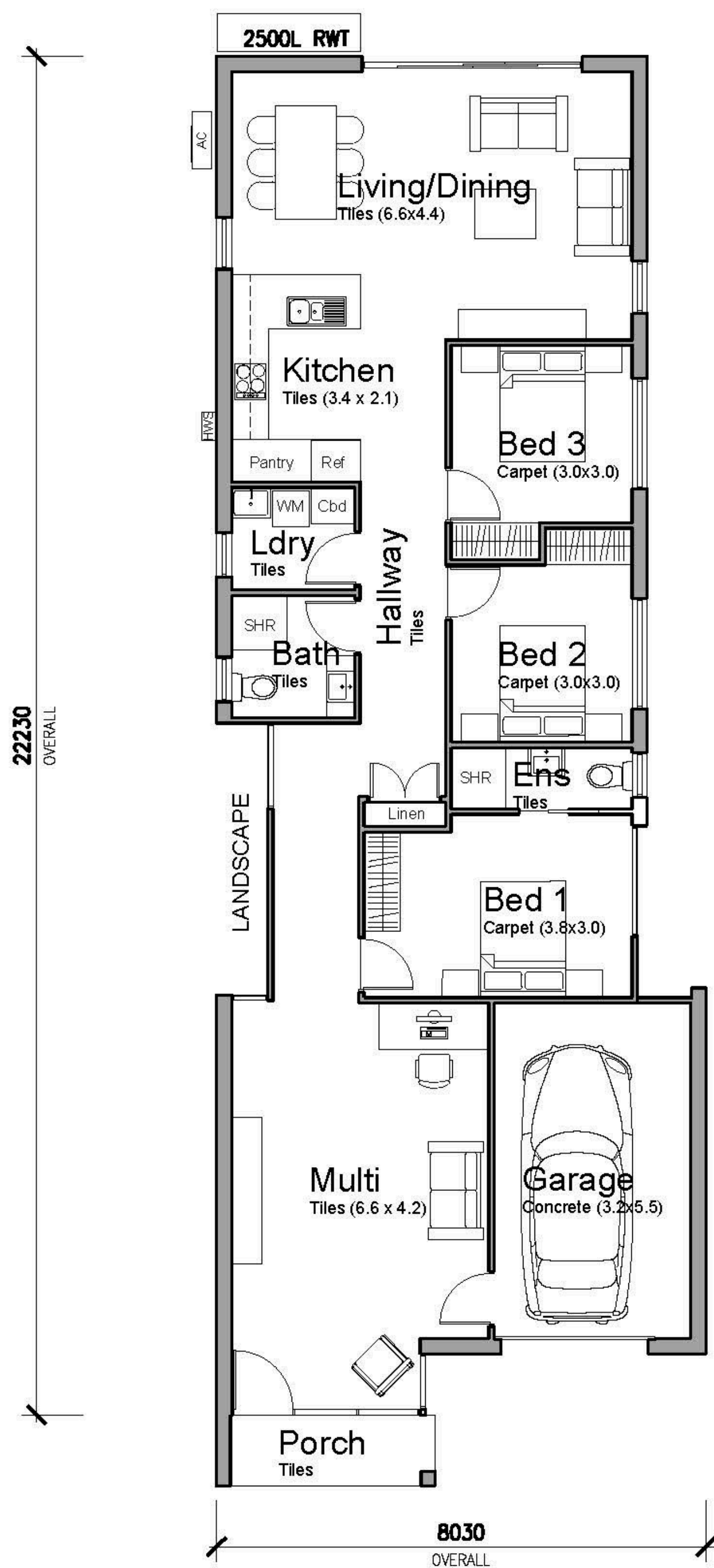
 **HUME DOORS & TIMBER**
100% Australian Owned

 **australbricks®**

 **LANE**
SECURITY - STYLE - FUNCTION

Head Office: 02 9627 4191 Sales: 0409 613 059 www.codehomes.com.au sales@codehomes.com.au

Disclaimer: All plans, images, and areas are indicative only. The finishes to the nominated design are to be used as a guide only. Buyers are advised to refer to the land contract and or builders tender and contract for precise specifications and inclusions. Code Homes reserves the right to change, specifications, materials and suppliers. Builders Licence: 217700c



Ground Floor Plan

WINDHAM 3 WITH ENSUITE

141.9 m² (15.27 squares)

1. Floor Area (incl Garage)	141.9m ²
-----------------------------	---------------------

Min Lot Size: 9m x 30m

Min Frontage: 9m

© DRAWINGS AND DESIGN IS PROTECTED BY COMMONWEALTH COPYRIGHT ACT 1968 –10(a) AND 10(b). AND MUST NOT BE REPRODUCED OR COPIED IN ANY FORM WITHOUT THE WRITTEN PERMISSION OF NICHOLAS SIMITZIS.

Head Office: 02 9627 4191 Sales: 0409 613 059 www.codehomes.com.au sales@codehomes.com.au

Disclaimer: All plans, images, and areas are indicative only. The finishes to the nominated design are to be used as a guide only. Buyers are advised to refer to the land contract and or builders tender and contract for precise specifications and inclusions. Code Homes reserves the right to change, specifications, materials and suppliers. Builders Licence: 217700c