



**PACKAGE PRICE**  
**\$1,168,000**

**REGISTRATION**  
**DEC 2025**  
**FRONTAGE 9.4M2**  
**AREA 300M2**

*\*For Illustration Purposes Only*  
*\*\*Price Estimate*

**LOT,3 20 Park Road Leppington Nsw 2179**

**LAND PRICE**  
**\$680,000**

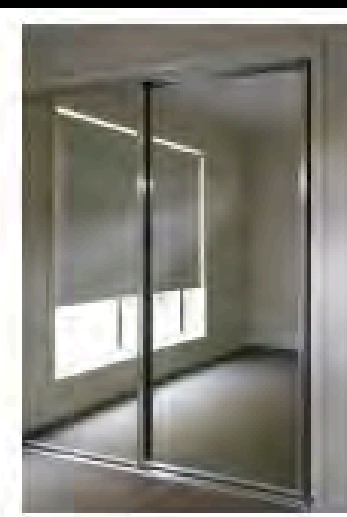
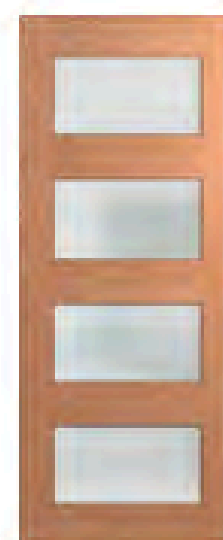
**HOUSE PRICE**  
**\$488,000**

## Oxford 4Bed 3Bath 1Car

### Inclusions:

- ✓ **Ceramic tiling to Porch, Entry, Dining/ Family**
- ✓ **Natural Gas Package - inc Rheem Instantaneous HWS**
- ✓ **Insulation to ceiling & walls**
- ✓ **Colourbond Roofing**
- ✓ **Natural Coloured Driveway**
- ✓ **20mm Caesarstone benchtop to kitchen**
- ✓ **600mm European stainless steel appliances**
- ✓ **Freestanding Bath**
- ✓ **PEACE OF MIND INCLUSIONS PACKAGE\*** For full inclusions visit our website at [www.codehomes.com.au](http://www.codehomes.com.au)

Quality Inclusions. Quality Brands.



**australbricks**  
SINCE 1908

**Bradnam's**  
windows & doors

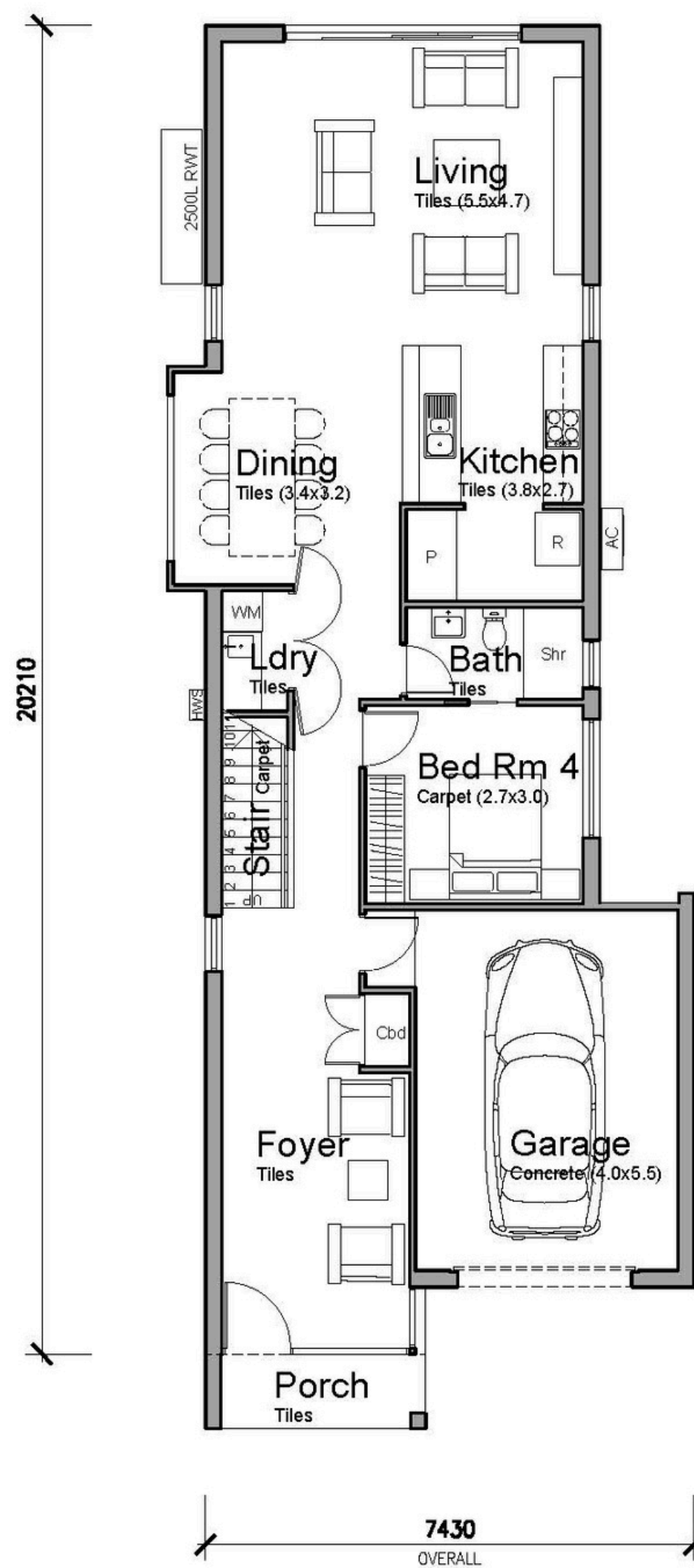
**CLIPSAL**

**caesarstone**

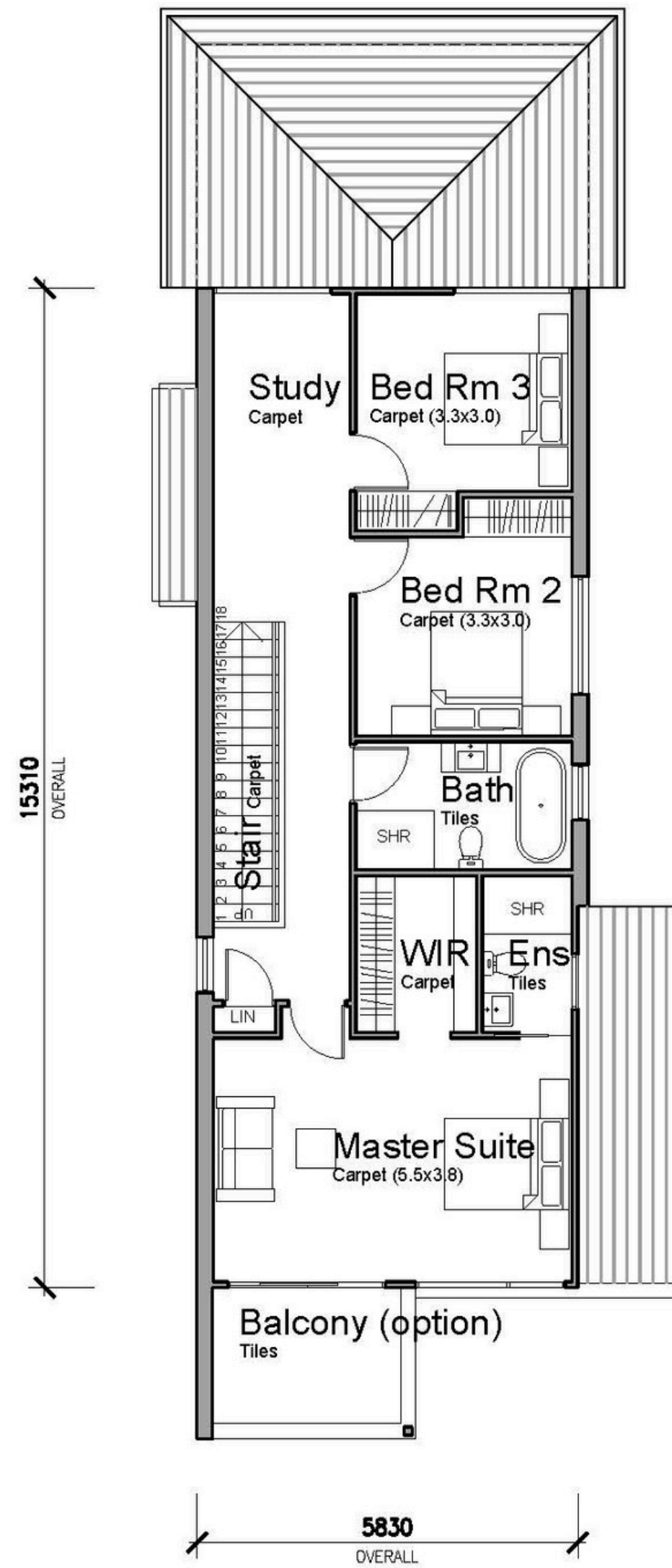
**Head Office: 02 9627 4191 Sales: 0409 613 059 [www.codehomes.com.au](http://www.codehomes.com.au)**

Disclaimer: All plans, images, and areas are indicative only. The finishes to the nominated design are to be used as a guide only. Buyers are advised to refer to the land contract and or builders tender and contract for precise specifications and inclusions. Code Homes reserves the right to change, specifications, materials and suppliers. Builders Licence: 217700c





Ground Floor Plan



First Floor Plan

## OXFORD 194.22m<sup>2</sup> (20.91 squares)

1. Ground Floor Area (incl Garage)	116.26m <sup>2</sup>
2. First Floor Area	77.96m <sup>2</sup>

Min Lot Size: 9.0m x 28.0m (252m<sup>2</sup>)

Min Frontage: 9.0m

© DRAWINGS AND DESIGN IS PROTECTED BY COMMONWEALTH COPYRIGHT ACT 1968 -10(a) AND 10(b). AND MUST NOT BE REPRODUCED OR COPIED IN ANY FORM WITHOUT THE WRITTEN PERMISSION OF NICHOLAS SIMITZIS.