



Package Price
\$1,579,000

REGISTERED
LAND AREA 450M2
FRONTAGE 18.5M2

Lot 127,10 Hammons Place Edmondson Park Nsw **Land Price \$940,000** **House Price \$639,000**

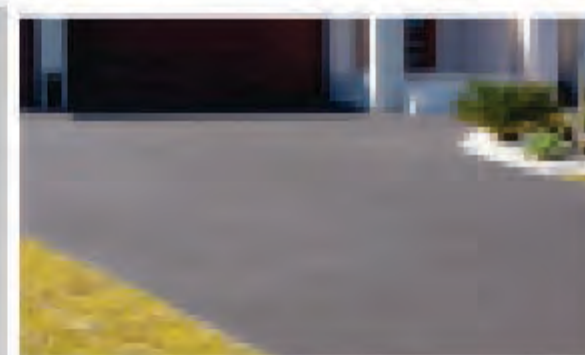
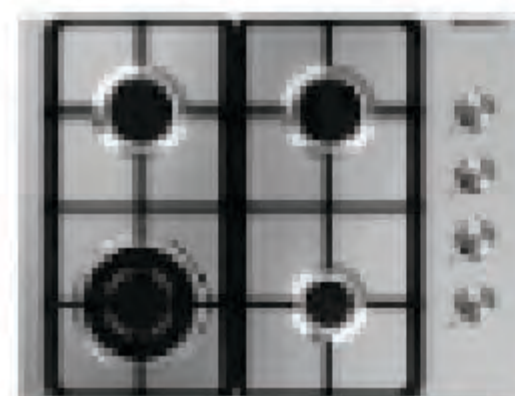
SUMERSET

5 Bed 3.5 Bath 2 Car

Inclusions:

- ✓ **Ceramic tiling to Porch, Entry, Dining/ Family**
- ✓ **Natural Gas Package - inc Rheem Instantaneous HWS**
- ✓ **Insulation to ceiling & walls**
- ✓ **Colourbond Roofing**
- ✓ **Natural Coloured Driveway**
- ✓ **20mm Caesarstone benchtop to kitchen**
- ✓ **600mm European stainless steel appliances**
- ✓ **Freestanding Bath**
- ✓ **PEACE OF MIND INCLUSIONS PACKAGE*** For full inclusions visit our website at www.codehomes.com.au

Quality Inclusions. Quality Brands.



australbricks
Since 1988

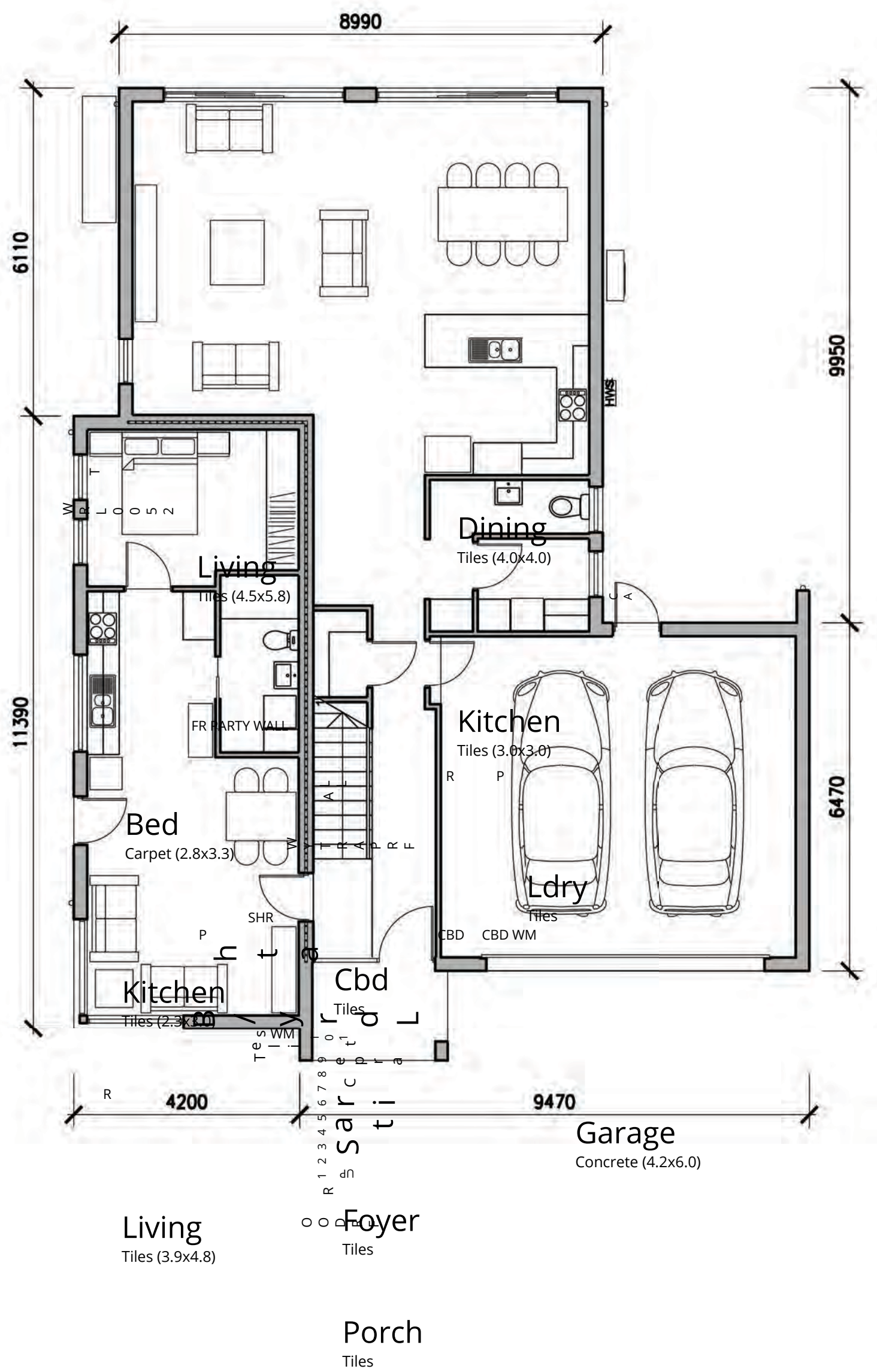
Bradnam's
Wholesale & Retail

CLIPSAL

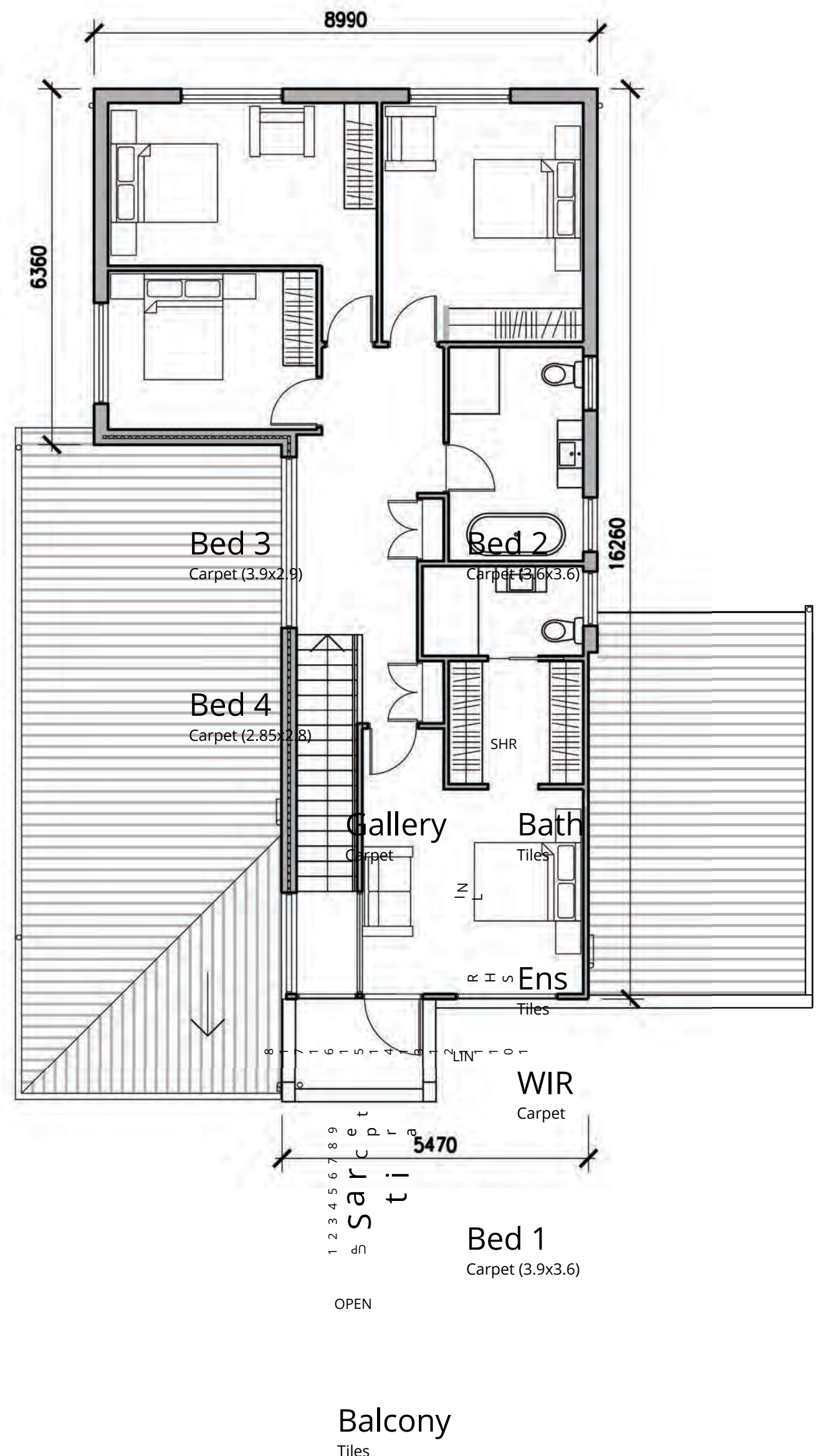
caesarstone

Head Office: 02 9627 4191 Sales: 0409 613 059 www.codehomes.com.au info@codehomes.com.au

Disclaimer: All plans, images, and areas are indicative only. The finishes to the nominated design are to be used as a guide only. Buyers are advised to refer to the land contract and or builders tender and contract for precise specifications and inclusions. Code Homes reserves the right to change, specifications, materials and suppliers. Builders Licence: 217700c



1 Ground Floor Plan
A2.1



2 First Floor Plan
A2.1

SUMERSET

283.4m2 (30.5 squares)

1. Primary Dwelling Area (incl Garage)	234.7m2
2. Secondary Dwelling Area	48.7m2

Min Lot Size: 15m x 30m
Min Frontage: 15m

NOTE: Concept design only –
subject to zoning and site conditions.