



PACKAGE PRICE
\$1,241,000

REGISTRATION
DEC 2025
LAND AREA 365m²
FRONTAGE 11.5m²

**For Illustration Purposes Only*
***Price Estimate*

LOT13,20 Park Road Leppington Nsw 2179 **LAND PRICE \$770,000** **HOUSE PRICE \$471,000**

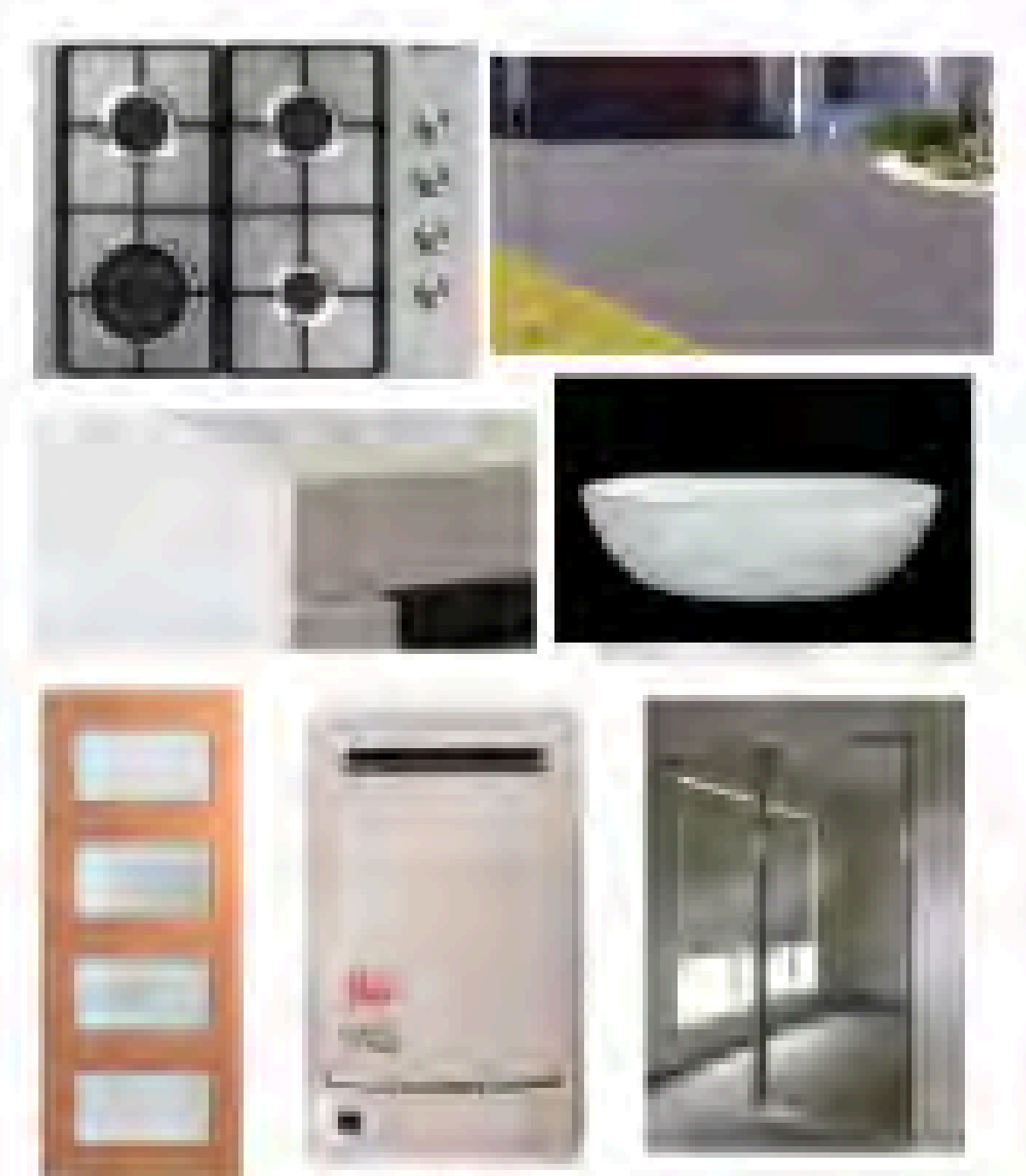
Kingston



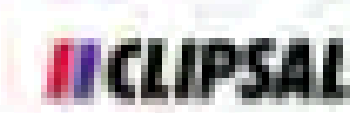

4Bed 2.5Bath 2car

Inclusions:

- ✓ Ceramic tiling to Porch, Entry, Dining/ Family
- ✓ Natural Gas Package - inc Rheem Instantaneous HWS
- ✓ Insulation to ceiling & walls
- ✓ Colourbond Roofing
- ✓ Natural Coloured Driveway
- ✓ 20mm Caesarstone benchtop to kitchen
- ✓ 600mm European stainless steel appliances
- ✓ Freestanding Bath
- ✓ **PEACE OF MIND INCLUSIONS PACKAGE*** For full inclusions visit our website at www.codehomes.com.au

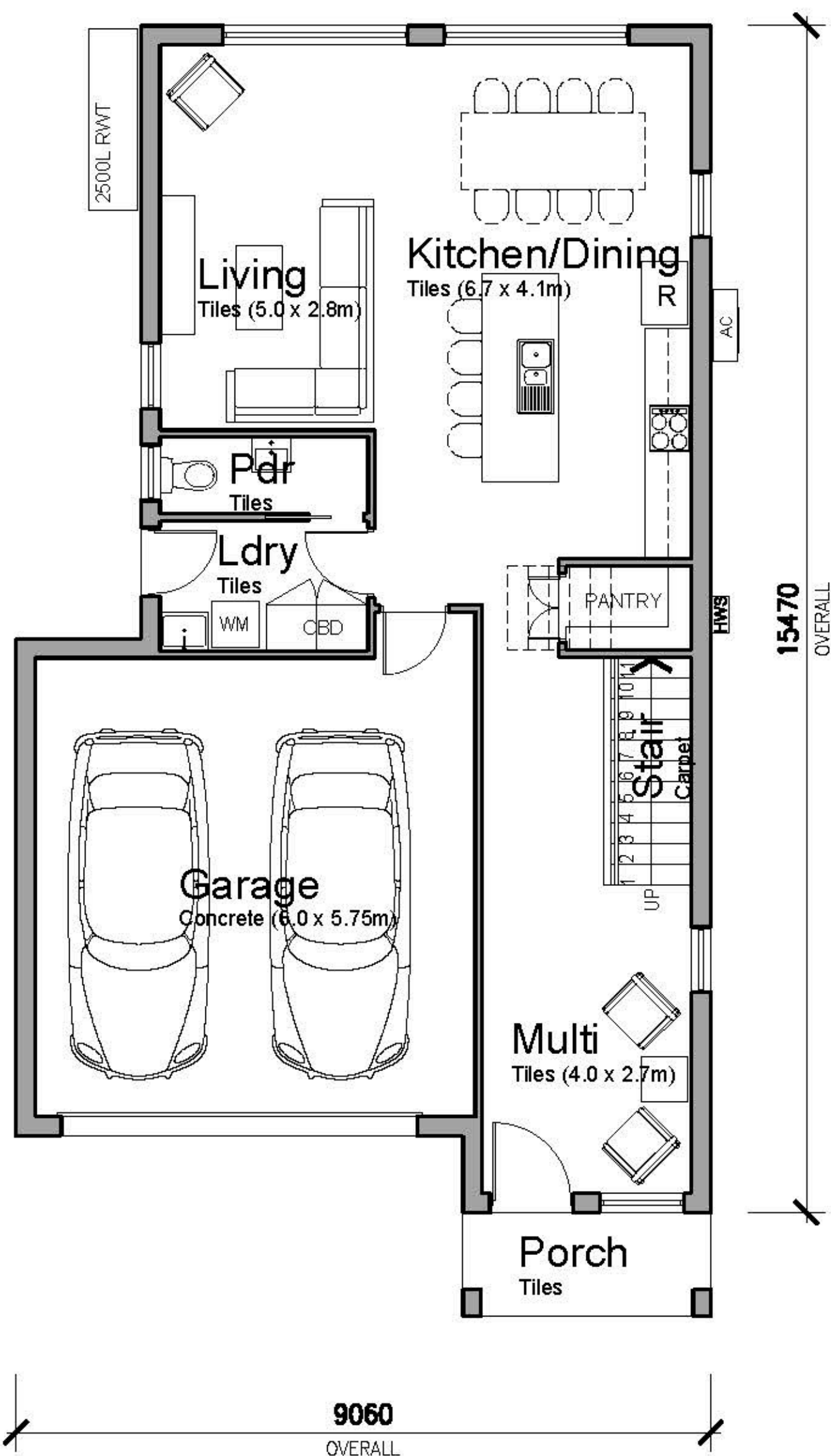
Quality Inclusions. Quality Brands.



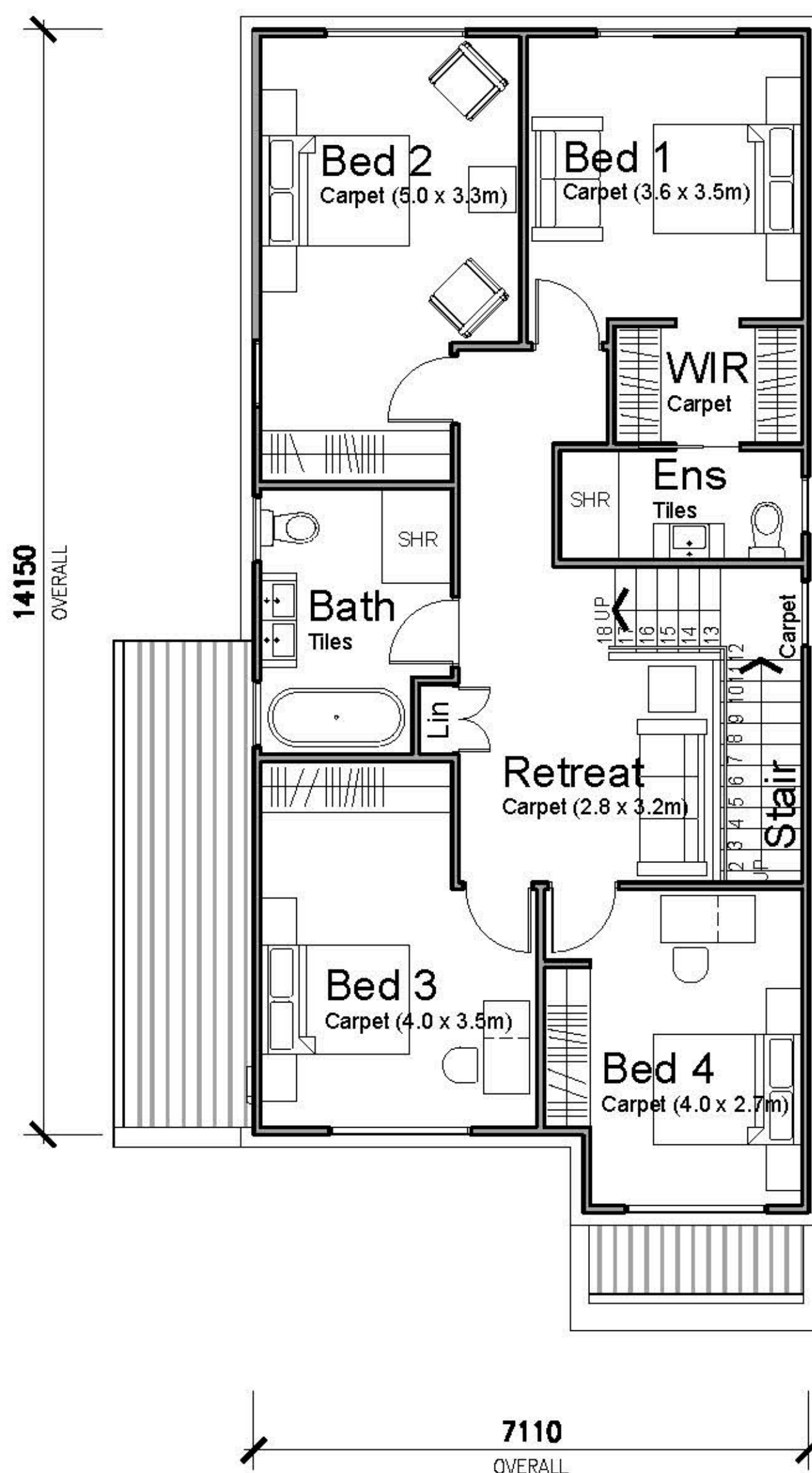





Head Office: 02 9627 4191 Sales: 0409 613 059 www.codehomes.com.au info@codehomes.com.au

Disclaimer: All plans, images, and areas are indicative only. The finishes to the nominated design are to be used as a guide only. Buyers are advised to refer to the land contract and or builders tender and contract for precise specifications and inclusions. Code Homes reserves the right to change, specifications, materials and suppliers. Builders Licence: 217700c



Ground Floor Plan



First Floor Plan

KINGSTON

205.32m² (22.10 squares)

- | | |
|------------------------------------|----------------------|
| 1. Ground Floor Area (incl Garage) | 105.80m ² |
| 2. First Floor Area | 99.52m ² |

Min Lot Size: 10.0m x 25.85m (258.5m²)

Min Frontage: 10.0m